

## Services

From the initial meeting to the final installation, Great Spaces takes care of every detail, allowing you to focus on the big picture. And our service doesn't end when the project does. We'll guide you through the evolution of your space as your needs and business requirements change, keeping your people productive and your space dynamic.

Our services include:

- **Workspace consulting** to provide input based on your staff's needs and work styles
- **Space planning support** to help you maximize your work environment's capabilities
- **Product specification**, assisting you in choosing furniture, walls, floors and technology that best adapt to your space and design
- **Project management**, ensuring your project is completed on time and on budget
- **Installation and reconfiguration** to get you up and running
- **Trade-in Programs** to maximize your return on investment and keep products out of the landfill
- **Rental programs** to address temporary furniture requirements
- **Asset maintenance**, ensuring your assets are always performing for you

For more information about any of our products or services, please give us a call. Our professional, courteous staff will be happy to assist you.

great | spaces®

925 Bethel Street  
Suite 101  
Honolulu, Hawaii 96813

Contact us at 808.546.5588  
or visit us at  
[www.greatspaceshonolulu.com](http://www.greatspaceshonolulu.com)



great | spaces®

ADAPTABLE WORK SPACES  
COLLABORATIVE SOLUTIONS

HAWORTH®  
An Authorized Dealer





### Great Spaces

Great Spaces furnishes commercial, educational, healthcare and government spaces throughout Hawaii and the Pacific region. Through our partnership with Haworth and with over 50 years of providing interior products to the Islands, we are confident that we can help you create thoughtfully designed, sustainable and adaptable workspaces.

### You

Nobody knows your business the way you do. Thus, you are an integral part of the solution. We bring a wealth of workspace intelligence to the table in collaboratively working with you in developing the solution that best fits your needs. Our process brings out the best in both of us and results in collaborative solutions.



# adaptable workspaces, collaborative solutions...

Office Furniture | Caseloads and Storage | Movable Walls | Seating | Sustainability | Lighting | Technology Integration | Underfloor Air | Office Furniture | Caseloads and Storage | Seating | Movable Walls

**Great spaces inspire.** They perform for the people and organizations who depend on them. They support technology, ergonomics, user control, and sustainability. And they adapt without protest to the ever-changing landscape of business today.

**Integrated Design.** As a Haworth dealer, we help you create great spaces through aesthetically and functionally integrated office design. From private offices to the open plan and public areas, our products share one overarching dimensioning, finishes, and detailing strategy. Each piece is great on its own -- but they work even better together. What's more, our broad range of materials and finishes -- common across lines -- allows you to invent just the space you imagine.

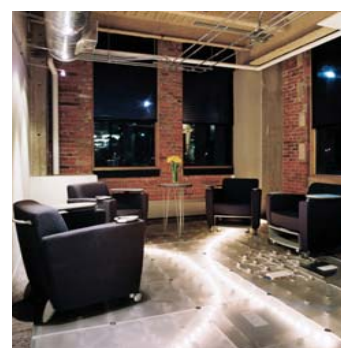
**Adaptable and Sustainable.** In addition to adapting to your space and your vision, Haworth products are also designed to adapt to change. Systems, moveable walls, office furniture, and utilities can be quickly configured and reconfigured time and time again, saving money and minimizing their impact on the environment.



Office Furniture



Movable Walls



Raised Floors



Technology Integration